

# Initial Activation & Installation

**Most problems with batteries today are due to improper initial activation.**

**Many people, even professionals, think it is enough just to put acid in the battery and start the engine...**

**WRONG: newly activated batteries should ALWAYS be CHARGED before you install them into the motorcycle.**

**Otherwise they lose at least 20% of their capacity. This will definitely result in much shorter service life or other battery problems.**

Here we give you the rules for proper initial activation and installation:

## A) Conventional and High Cranking batteries:

Remove the sealing tube – the red cap.

Remove the plugs from the upper side of the battery.

Fill the battery with electrolyte (specific gravity: 1.26 to 1.28).

Fill to upper level indicated on the battery.

Let the battery stand for 30 minutes.

If the acid level has fallen, refill with acid to upper level.

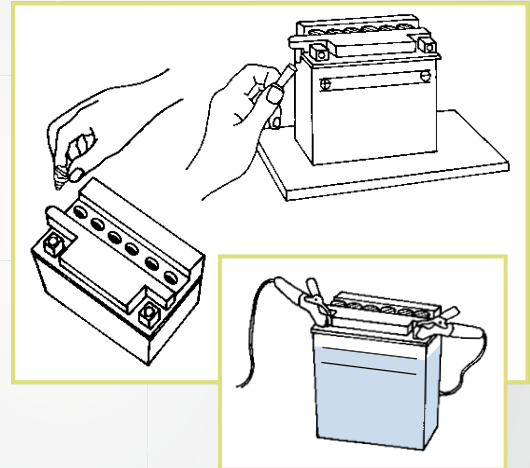
**CHARGE THE BATTERY COMPLETELY**

Charge for three to five hours at the current equivalent of 1/10 of its rated capacity.

Example: YB14L-A2. rated capacity: 14 AH. Charge 3 – 5 hours with 1,4 Amps.

After charging replace the plugs and clean any acid on the outside of the battery.

Now it is ready for installation.



## B) Super MF batteries:

Remove the foil sheet covering the filler ports.

ONLY use the electrolyte container supplied together with the battery. Remove the electrolyte container cap strip. You will use this later to seal the battery. Place the container, sealed top of the cells down, into the filler ports of the battery.

Hold the container and push down to break the seals.

You will see air bubbles rising.

Keep the container in this position until it is completely empty.

Remove the container.

Let the battery stand for 30 minutes.

Place the cap strip loosely over the battery filling holes.

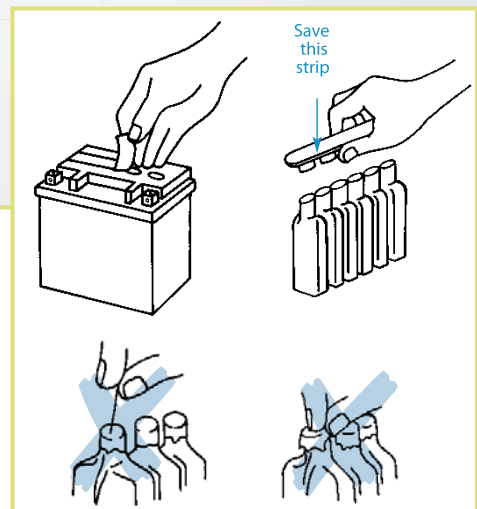
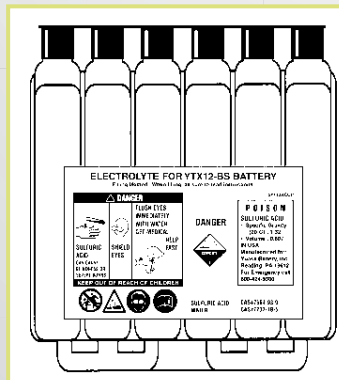
**CHARGE THE BATTERY COMPLETELY**

Charge for three to five hours at the current equivalent of 1/10 of its rated capacity.

Example: YTX9-BS: rated capacity: 8 AH.

Charge 3 – 5 hours with 0,8 Amps.

After charging press down firmly with both hands to seat the cap strip.



## C) Sealed VRLA

Check the open circuit voltage using a voltmeter.

A newly activated battery should

have 12.8 Volt or higher.

If less, CHARGE THE BATTERY COMPLETELY.

Charge for three to five hours at the current equivalent of 1/10 of its rated capacity.

Example: YTZ12S: rated capacity:

11 AH. Charge 3 – 5 hours with

1,1 Amps.



## REMEMBER

After adding electrolyte, a new battery is approximately 80% charged.

ALL TYPES OF BATTERIES NEED TO BE CHARGED BEFORE INSTALLATION INTO THE MOTORCYCLE

OTHERWISE IT WILL PERMANENTLY LOSE:

- 20% of its maximum rated capacity
- 30% of its service life